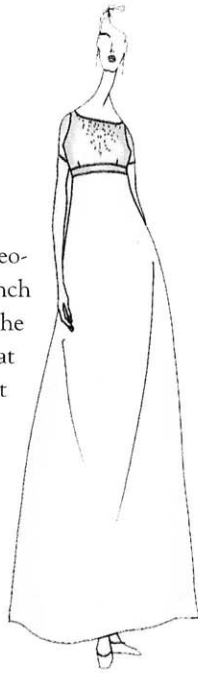




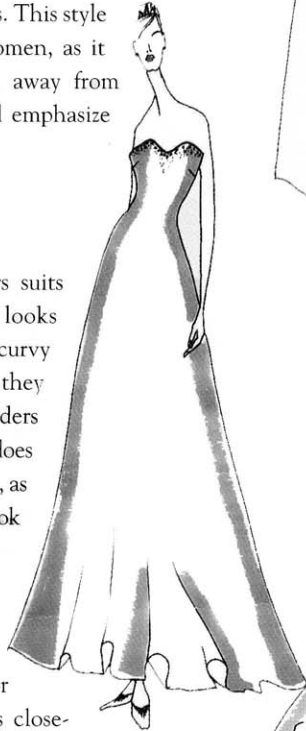
EMPIRE LINE

Napoleon's wife Josephine popularised this neo-classical style with a high waist after the French Revolution. The waistline starts just beneath the bust and is normally defined by a seam. It's great for smaller busted brides and the raised waist creates a long line which is also ideal for petite brides. This style suits pear-shaped women, as it will draw attention away from wider waistlines and emphasize the face instead.



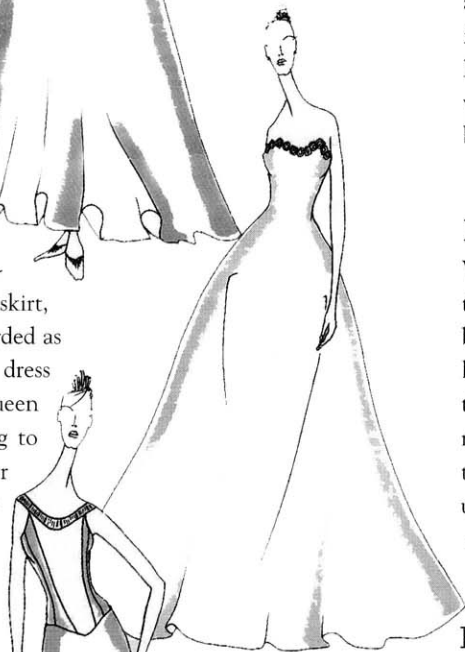
STRAPLESS

Baring the shoulders suits most figures but looks particularly good on curvy brides, especially if they have defined shoulders and arms. This style does not suit buxom brides, as it can make them look top heavy.



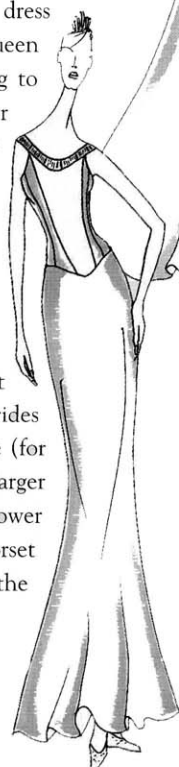
BALLERINA

The perfect style for fairy-tale brides, this close-fitting bodice with a full skirt, often made of tulle, is regarded as the most romantic of all dress shapes. Introduced by Queen Victoria, it's most flattering to brides with an hourglass or full figure. The big skirt may overpower petite brides or those with a much larger bust.



CORSET AND SKIRT

A separate corset and skirt can work wonders for brides who are not a standard size (for instance, if you have a larger bust in comparison to your lower body). A boned bodice corset can also take an inch off the waistline.



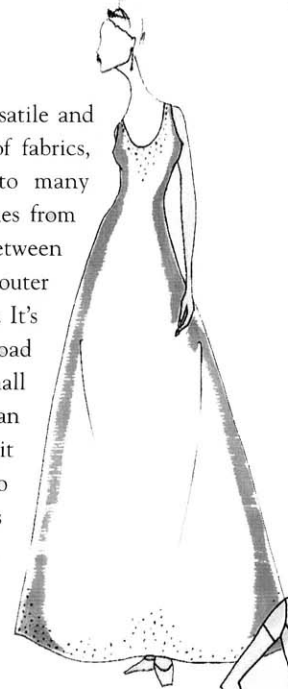
COLUMN DRESS

As its name suggests, the column dress is very straight and seamed on the waistline. This modern style gives a streamlined appearance and can work well for pregnant brides, as well as tall, slim-hipped women.



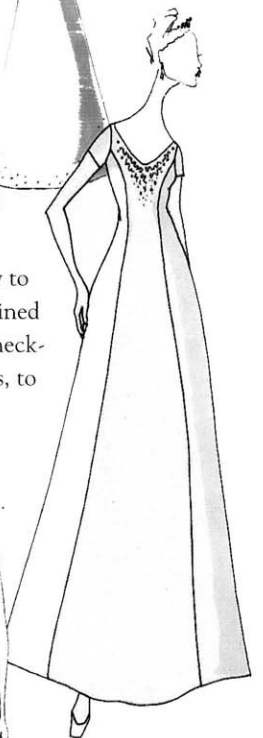
A-LINE

The A-line dress is versatile and suitable for a variety of fabrics, making it flattering to many figures. The name comes from the triangle 'A' shape between the narrow bodice and outer edges of the wider skirt. It's great for covering broad hips and flatters a small waist. A center seam can divide the body making it appear slimmer. Also ideal for shorter brides looking for a dress that will make them seem a bit taller.



PRINCESS

With a fitted bodice that flares out slightly to the hemline, the princess style dress is defined by uninterrupted seams that run from the neckline, skimming the waist and over the hips, to the base, for flattering and slimming results. It's closely related to the A-line style with a broad, ungathered skirt. Good for pear-shaped brides.



BIAS CUT

The bias-cut dress is the most modern of all the bridal silhouettes and is very flattering if worn by the right shape girl. The dress style is cut on the cross and is quite straight and figure hugging, and is often designed with a puddle train. Bias-cut dresses look best on very slim, tall brides.

